



Thornton Tomasetti

JANUARY 23, 2026

STATE OF PRACTICE AND POTENTIAL SOLUTIONS FOR EXPLOSIVE SAFETY DELEGATED DESIGN

- Fred Jorgensen, PE, PSP
- Kevin Mueller, PhD, PE, PSP
- Daksh Patel, PE

AGENDA



1. Case Study Laboratory Overview
 - A. Doors and Gaskets
 - A. Blast Valves
 - B. Frangible Panels
 - C. Wall Sleeves
2. Magazine Doors
3. Mechanical Couplers
4. Summary and Conclusions

AGENDA



1. Case Study Laboratory Overview

A. Doors and Gaskets

A. Blast Valves

B. Frangible Panels

C. Wall Sleeves

2. Magazine Doors

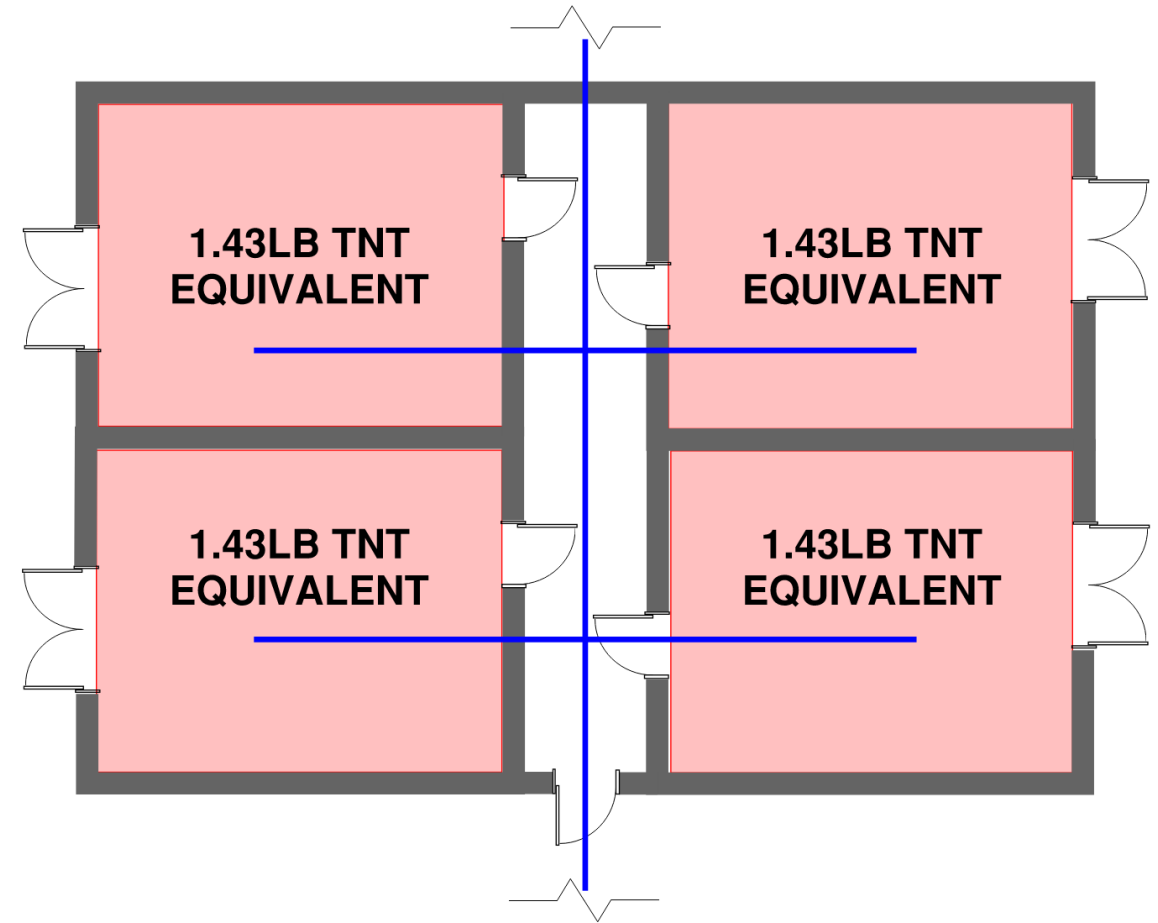
3. Mechanical Couplers

4. Summary and Conclusions

EXPLOSIVE LABORATORY CASE STUDY



- Interior explosive lab group within a larger building
- 1.43lb TNT equivalent weight
- Concurrent non-related operations
- Class I/K24 separation required
- Delegated design items:
 - Blast Doors
 - Supply Air (blast valves)
 - Frangible Panel (not shown)



AGENDA



1. Case Study Laboratory Overview

A. Doors and Gaskets

A. Blast Valves

B. Frangible Panels

C. Wall Sleeves

2. Magazine Doors

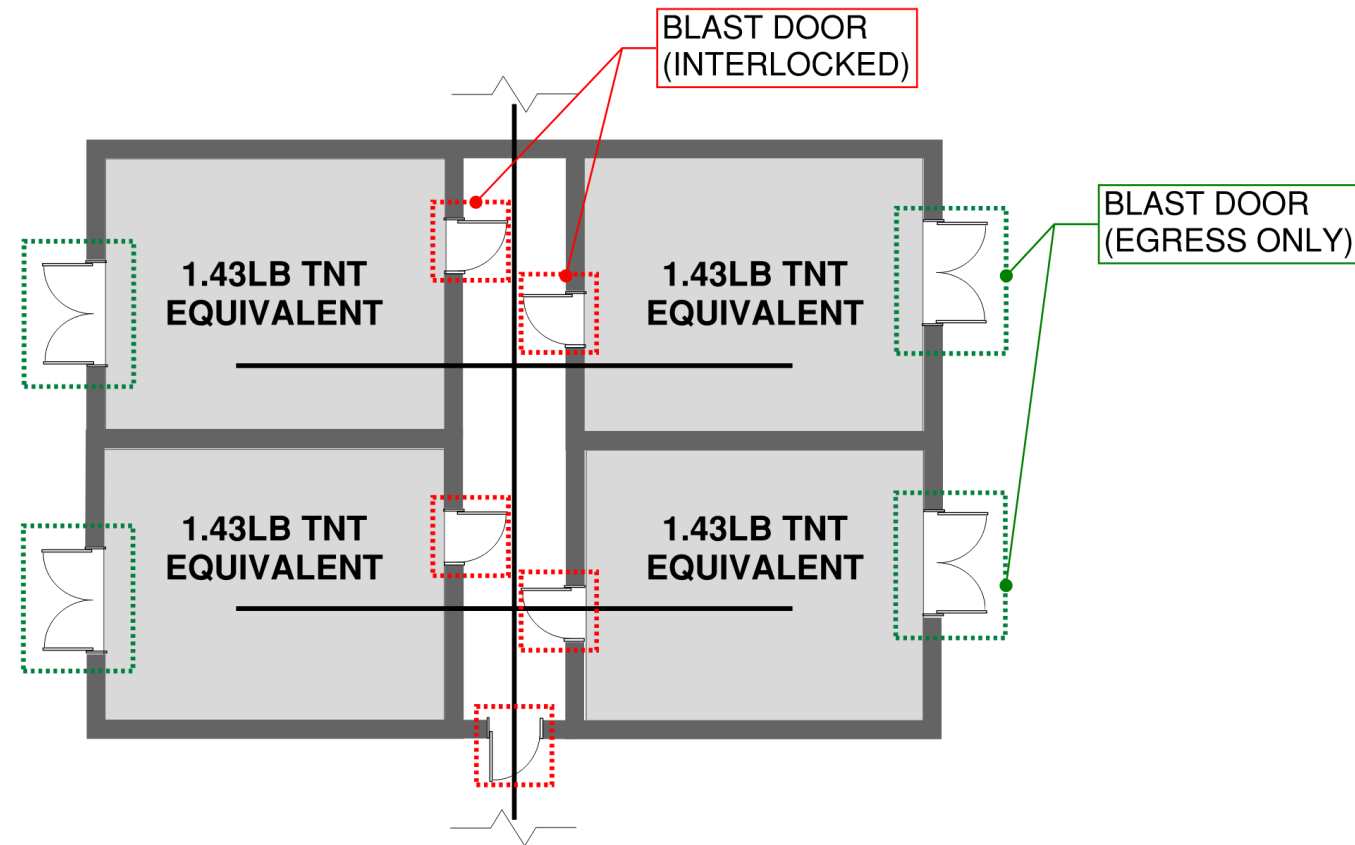
3. Mechanical Couplers

4. Summary and Conclusions

CASE STUDY - DOORS



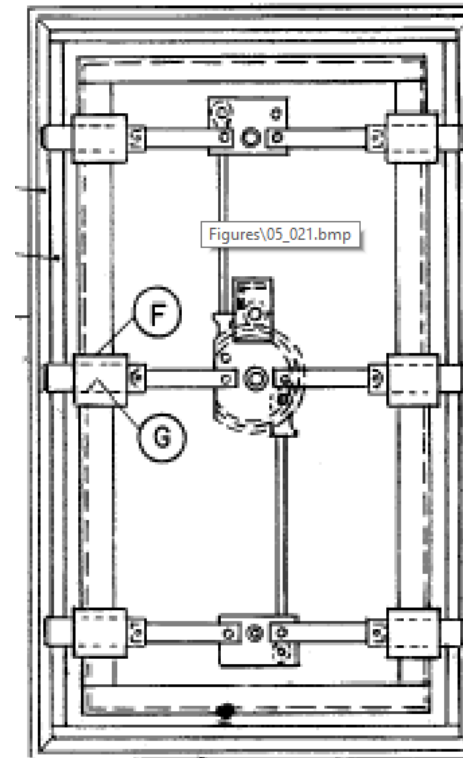
- Delegated Design Challenges
 - Emergency egress out of the lab
 - Operation requirement to satisfy ABA/ADA
 - Interlocking doors to avoid exposure into other laboratories
 - Full containment concerns
 - Door manufacturers prefer to utilize cold formed pressed sheet steel



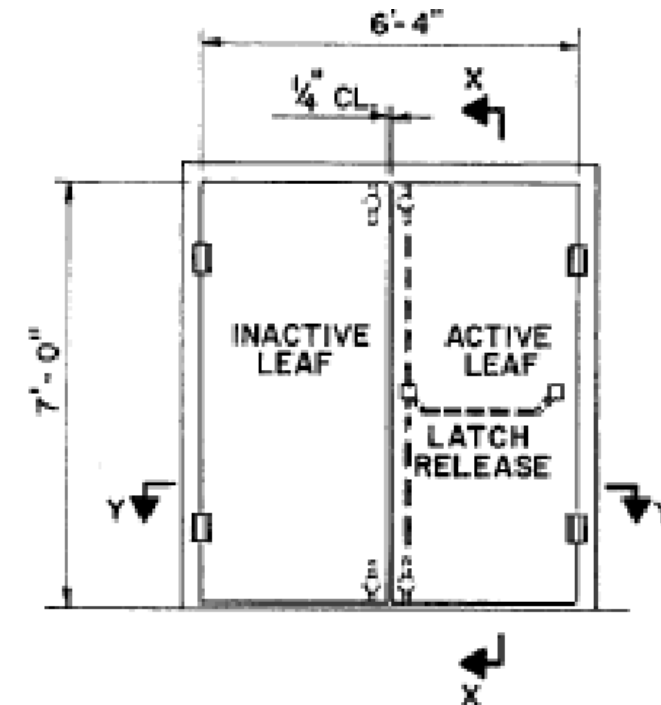
CASE STUDY - DOORS



- Solutions
 - Egress doors are operationally controlled to be used for emergencies only
 - Panic devices removed due to explosive safety requirements superseding NFPA requirements
 - Doors are electronically interlocked to avoid multiple openings within the vestibule
 - Exclusion zones around the door are provided to reduce the weight of the door and utilize cold formed pressed sheet steel
 - High pressure doors were provided by specialty manufacturers



UFC 3-340-02, FIGURE 5-21

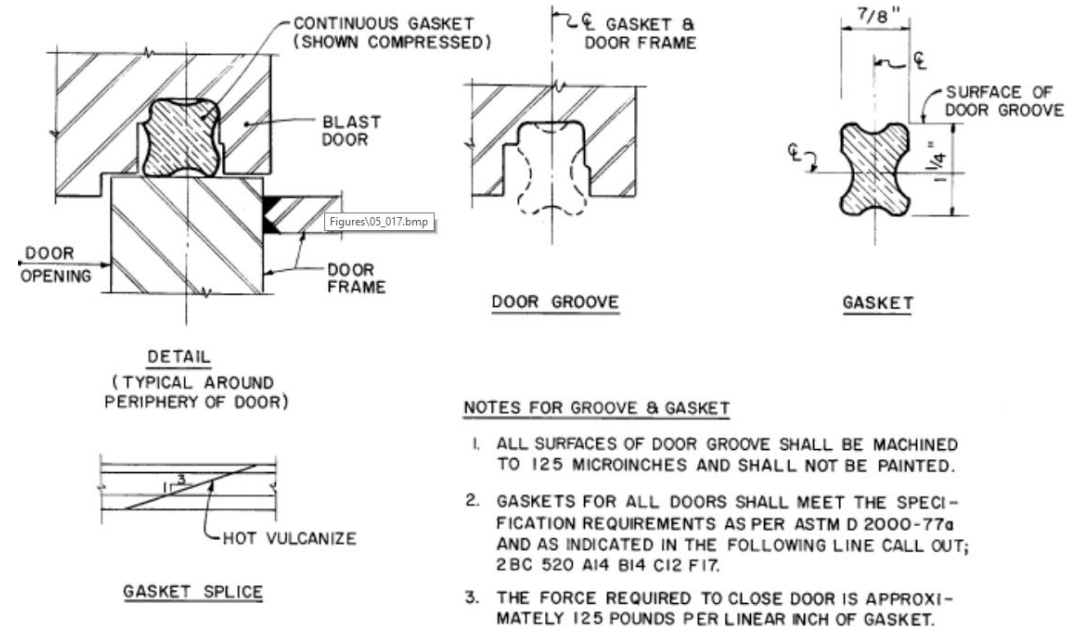


UFC 3-340-02, FIGURE 5-41

CASE STUDY - GASKETS



- End user initially wanted gasketing to eliminate the explosive hazards emanating from the room
- UFC 3-340-02 method is prescriptive
 - Requires a compressor
 - Requires a frame at the vertical jambs, head, and sill
- End user accepted risk of the of nominal leakage around the perimeter of the frame without pressure tight gasketing
- [Action Item] Future guidance in criteria to determine prescriptive limits on threshold gaps



UFC 3-340-02, FIGURE 5-17

AGENDA

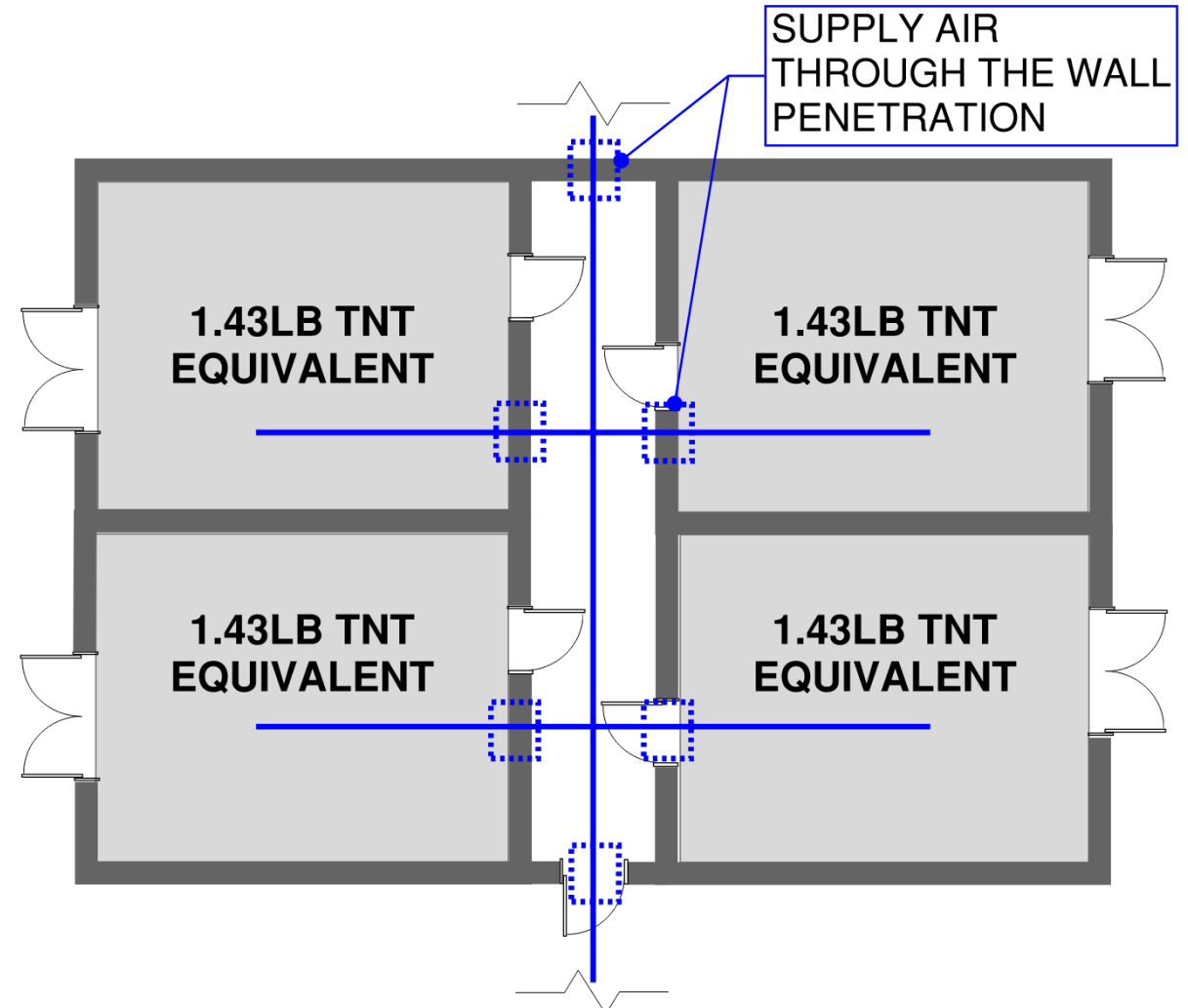


1. Case Study Laboratory Overview
 - A. Doors and Gaskets
 - A. Blast Valves
 - B. Frangible Panels
 - C. Wall Sleeves
2. Magazine Doors
3. Mechanical Couplers
4. Summary and Conclusions

CASE STUDY – BLAST VALVES



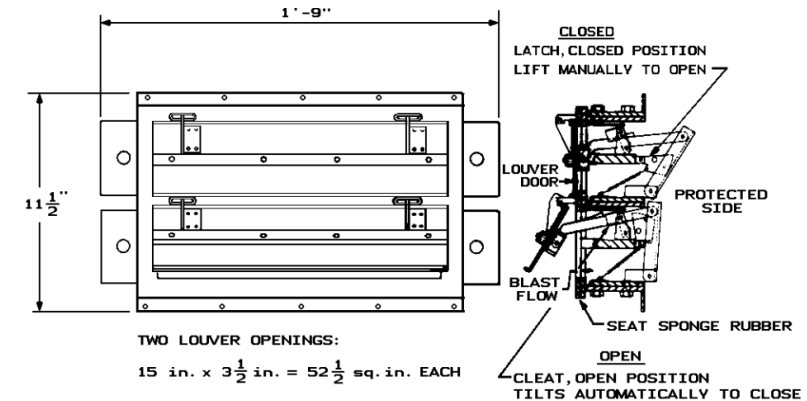
- Delegated Design Challenges
 - Design team preferred to use a wall penetration for supply air
 - Maintaining air flow using blast valves
 - Limited suppliers of blast valves
 - Coordination of wall pier to avoid complex load paths at the support
 - Prevent ductwork falling at adjacent spaces



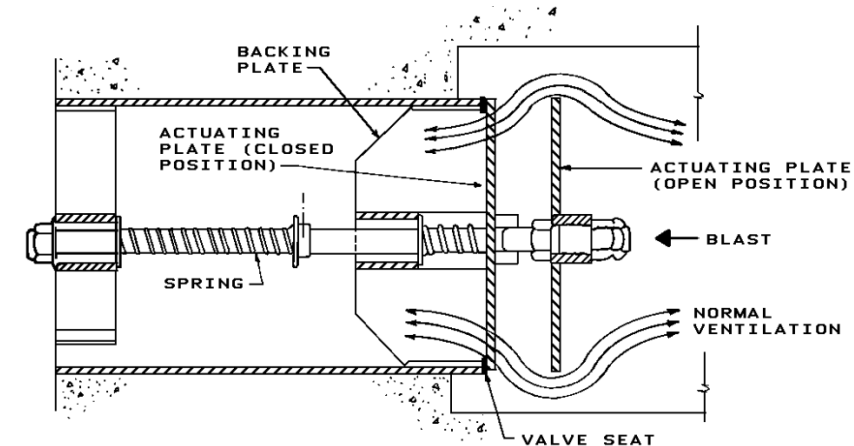
CASE STUDY – BLAST VALVES



- Hardened Solution
 - Provide “poppet” valve at laboratory space and blast louver valve at interlocked vestibule
 - Utilize welded scheduled 80 pipe to eliminate falling damage threat through hardening
- Threat removal
 - Provide supply air penetration at the roof to avoid hazards at adjacent occupied spaces
- Advanced Analysis
 - Utilize advanced analysis to determine the explosive hazards within adjacent areas to help the end-user understand the risk profile
- [Action Item] Provide standard details for blast valves



UFC 3-340-02, FIGURE 6-64, LOUVERED



UFC 3-340-02, FIGURE 6-65, POPPET VALVE

AGENDA

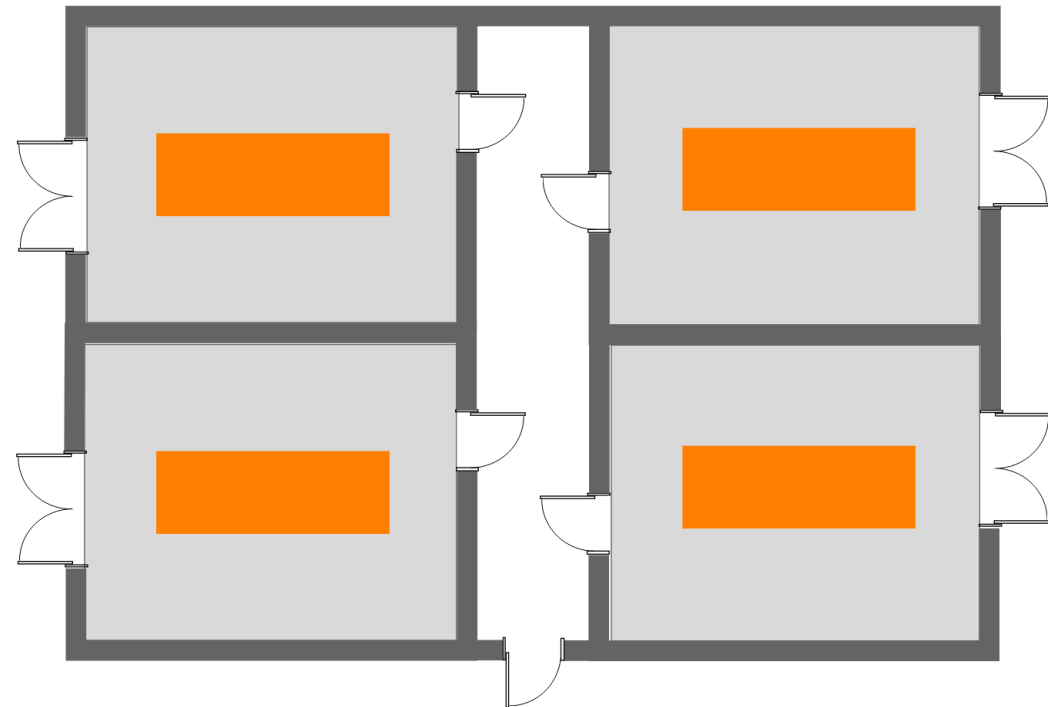


1. Case Study Laboratory Overview
 - A. Doors and Gaskets
 - A. Blast Valves
 - B. Frangible Panels
 - C. Wall Sleeves
2. Magazine Doors
3. Mechanical Couplers
4. Summary and Conclusions

CASE STUDY – FRANGIBLE PANELS



- Delegated Design Challenges
 - Required to resist environmental loads without failure (wind and snow)
 - Required to resist leakage blast loads from adjacent explosive operations
 - Required to release at minimum pressure; is it feasible?



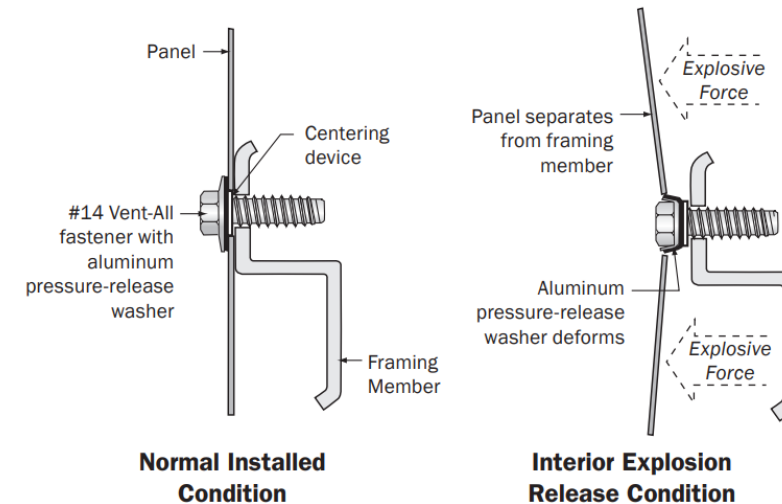
CASE STUDY – FRANGIBLE PANELS



- Solutions
 - Consider design wind load as the frangible release
 - Consider snow load in conjunction with mass of the panel to avoid operationally clearing snow
 - Explovent product is no longer in production
 - Elco vent-all fasteners for a custom solution



EXPLOVENT XRV-IC



ELCO VENT-ALL EXPLOSION-VENTING FASTENERS

CASE STUDY – FRANGIBLE PANELS



- Lessons learned
 - Avoid off the shelf panel solutions if environmental loads need to be considered
 - Off the shelf solutions have a very low release limit which conflicts with environmental loads
 - Use custom design solutions rather than delegating the design to maintain control over gas loading
 - 25psf break away pressure is not feasible for frangibility with most wind loads
- **[Action Item] Revisit frangibility requirement to align with environmental loads**

AGENDA



1. Case Study Laboratory Overview

A. Doors and Gaskets

A. Blast Valves

B. Frangible Panels

C. Wall Sleeves

2. Magazine Doors

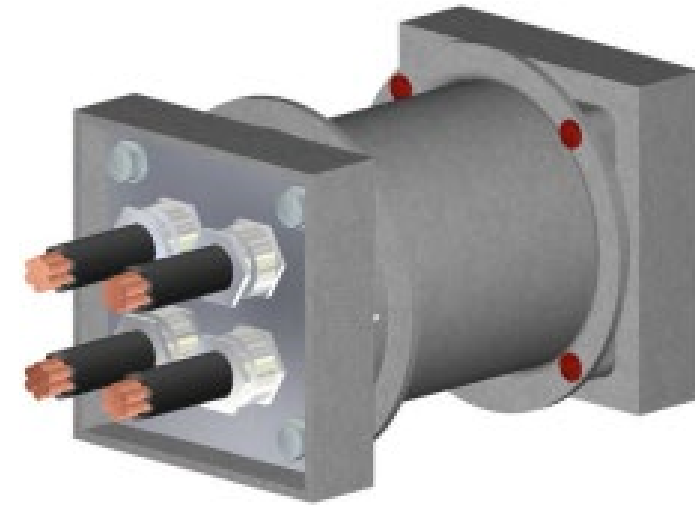
3. Mechanical Couplers

4. Summary and Conclusions

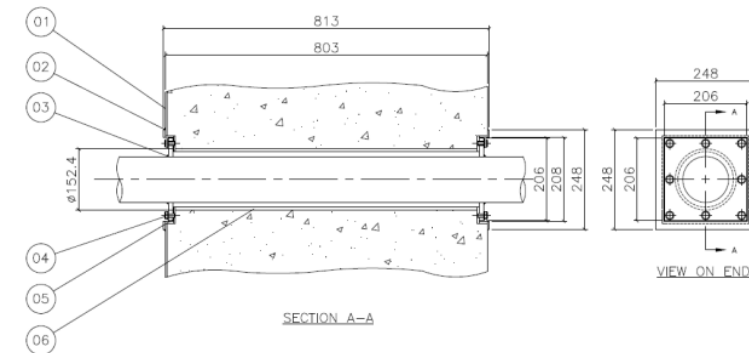
WALL SLEEVES



- Delegated Design Challenges
 - Limited suppliers
 - No domestic manufacturers
 - End users desire flexibility with cabling through the wall (number of cables, diameter of cables, etc.)
- Additional penetrations creates complex load paths



TEMET LP-SJ-150



EEP DESIGN

WALL SLEEVES



- [Action Items]
 - Provide testing guidance that prescriptively limits opening size for different blast load magnitudes
 - Develop standard details for sleeves that are acceptable for explosive safety applications that can be incorporated into the design drawings
 - Develop a standard specification for wall sleeves

AGENDA



1. Case Study Laboratory Overview

A. Doors and Gaskets

A. Blast Valves

B. Frangible Panels

C. Wall Sleeves

2. Magazine Doors

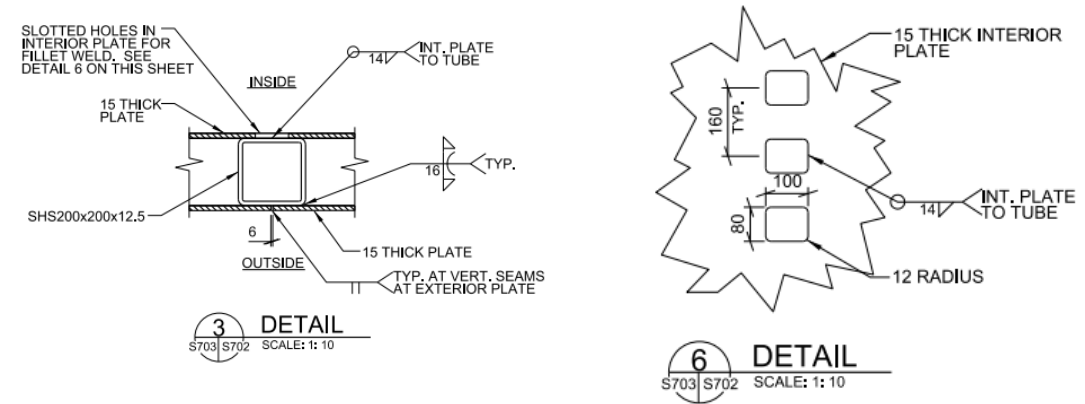
3. Mechanical Couplers

4. Summary and Conclusions

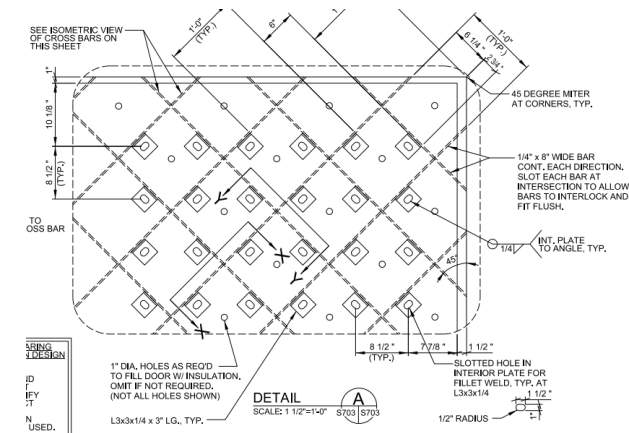
MAGAZINE DOORS



- Manufacturer Challenges
 - Approved standard magazine door weld schemes cause deformation of the skin plate
 - Typical door designs require field welding which may be difficult in remote locations
 - US Materials for approved standard magazines may not be able to be sourced internationally requiring additional analysis
- [Action Items]
 - Revise weld schemes with manufacturer input
 - Provide bolted alternative for remote locations



APPROVED STANDARD DWG # 421-80-13



APPROVED STANDARD DWG # 421-80-08

AGENDA

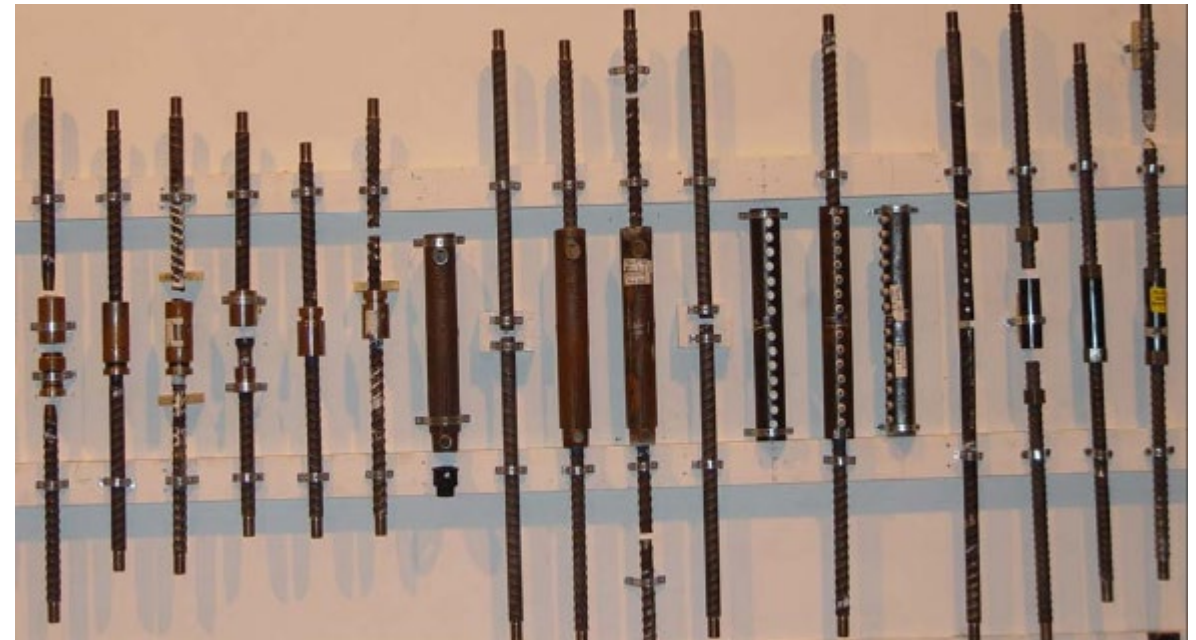


1. Case Study Laboratory Overview
 - A. Doors and Gaskets
 - A. Blast Valves
 - B. Frangible Panels
 - C. Wall Sleeves
2. Magazine Doors
3. Mechanical Couplers
4. Summary and Conclusions

MECHANICAL COUPLERS



- Couplers are required to comply with ERDC TR-09-08
 - No coupler has fully met the ERDC testing requirements
- **[Action Items]**
 - **Develop a standardized mechanical coupler test document**
 - **Develop a list of approved vendors/standard designs**
 - **Develop strength reductions for designs with mechanical couplers**
 - **Clarify criteria to note mechanical coupler limitations**



Hight Strain-Rate Testing of Mechanical Couplers

APPROVED STANDARD DWG # 421-80-08

AGENDA



1. Case Study Laboratory Overview
 - A. Doors and Gaskets
 - A. Blast Valves
 - B. Frangible Panels
 - C. Wall Sleeves
2. Magazine Doors
3. Mechanical Couplers
4. Summary and Conclusions

SUMMARY AND CONCLUSIONS



- Additional testing to provide prescriptive limits on minor penetrations through the wall (perimeter of the door, small opening for MEP opening, etc.)
- Develop standard details/products for a wide range of acceptable applications
- Coordinate with all disciplines to confirm order of precedence for design (blast, fire, environmental, ABA/ADA)
- Develop standard specifications for wall sleeves and frangible panels
- Engage with manufacturers to develop standard details
- Engage delegated designers early in the process

THANK YOU



Fred Jorgensen, PE, PSP

fjorgensen@thorntontomasetti.com